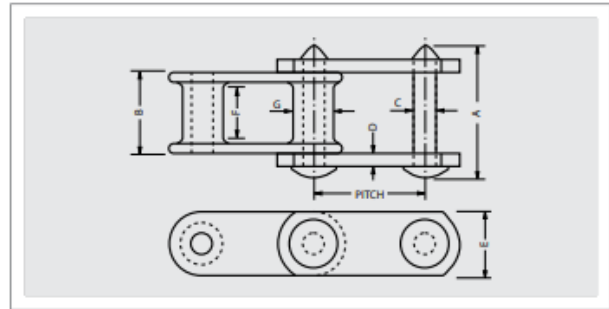


SUPPLY SERVICES

performance engineering products

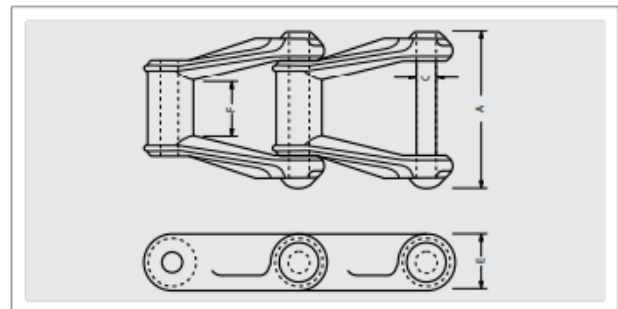
CAST H&C CLASS CHAINS

STEEL AND MALLEABLE COMBINATION CHAIN



Chain Number	Pitch	Ultimate Strength	Links	Average Weight	Overall Width	Length of Bearing	Rivet Dia.	Side Bar Thickness	Side Bar Height	Maximum Sprocket Face	Barel Dia.
	Inches	Lbs	Pcs./Foot	Lbs/Foot	A	B	C	D	E	F	G
C 55*	1.630	9,000	7.4	2.0	1 13/16	1 7/32	3/8	7/32	23/32	3/4	0.72
C 77*	2.308	11,000	5.2	2.3	2 3/32	1 1/4	7/16	3/16	7/8	11/16	0.72
C 188	2.609	14,000	4.6	3.5	2 5/8	1 9/16	1/2	1/4	1 1/8	7/8	7/8
C 131	3.075	24,000	3.9	6.7	3 5/8	2	5/8	3/8	1 1/2	1 1/8	1 7/32
C 102B	4.000	24,000	3.0	6.4	4 9/16	2 25/32	5/8	3/8	1 1/2	1 1/2	1

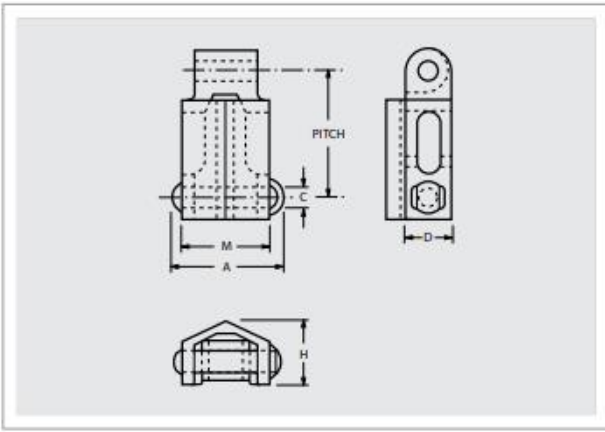
MALLEABLE CHAIN



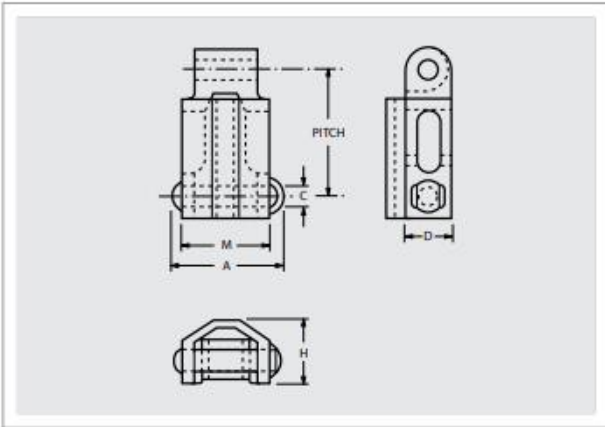
Chain Number	Pitch	Ultimate Strength	Links	Average Weight	Overall Width	Rivet Dia.	Side Bar Height	Maximum Sprocket Face
	Inches	Lbs	Pcs./Foot	Lbs/Foot	A	C	E	F
H-78	2.609	20,200	4.6	4.2	3 3/8	1/2	1 1/8	1
H-82	3.075	22,000	3.9	5.5	4 1/16	9/16	1 1/4	1 1/8



ROOF TOP H-78A, H-130



CAMELBACK H-78B, H-138



COMBINATION: ROOF TOP C-55A, CAMELBACK C-55B, UNITOP C-55D



Chain Number	Pitch	Ultimate Strength	Links	Average Weight	Overall Width	Roof Width	Rivet Dia.	Side Bar Height	Overall Height	
					A	M	C	D	H	
		Inches	Lbs	Pcs./Foot	Lbs/Foot	Inches				
H-78A	2.609	16,000	4.6	5.6	3 1/4	2 3/4	1/2	1 1/16	1 11/16	
H-78B	2.609	16,000	4.6	6.1	3 1/4	2 3/4	1/2	1 1/16	1 11/16	
H-130	4.000	14,000	3.0	5.2	3 1/4	2 13/16	1/2	1 7/64	1 11/16	
H-138	4.000	15,000	3.0	5.8	3 1/4	2 13/16	1/2	1 7/64	1 11/16	
C55A, C55B, C55D	1.630	9,000	7.4	3.2	2	1.2	3/8	3/4	1 1/4	

